

KENWOOD

55cm Undercounter Fridge Larder KUL55X18

installation / instructions manual



Contents

safety warnings	4
unpacking.....	6
installation.....	7
location	7
levelling the unit.....	7
installing the rubber support	7
free space requirements.....	7
installing the door handle	8
reversing the door swing	9
cleaning before use	10
before using your unit.....	10
product overview.....	11
main unit.....	11
operation	12
switching on your unit.....	12
adjusting the temperature.....	12
noises inside the unit!	12
tips for keeping food in the unit	13
cleaning	13
defrosting.....	13
cleaning the interior and the exterior of the unit	13
maintenance.....	14
changing the internal LED light	14
care when handling / moving your unit.....	14
servicing	14
switching off for long periods of time	14
condensation	14
disposal	14
specifications.....	15
product fiche.....	15

safety warnings

For your continued safety and to reduce the risk of injury or electric shock, please follow all the safety precautions listed below.

- Read all instructions carefully before using the unit and keep them for future reference.
- Retain the manual. If you pass the unit onto a third party, make sure to include this manual.
- This appliance is intended for indoor household use and similar applications such as:
 - farm houses and by clients in hotels, motels and other residential type environment;
 - bed and breakfast type environment;
 - staff kitchen areas in shops, offices and other working environment;
 - catering and similar non-retail applications.
- Ensure that the plug is easily accessible to enable disconnection from the mains supply.
- If the mains cable is damaged, it must be replaced by the manufacturer, its service agent or a qualified technician in order to avoid a hazard.
- Choose a location for your unit away from heat sources such as radiators or fires as refrigerant and vesicant are burnable.
- The unit must be manoeuvred by a minimum of 2 persons.
- This appliance can be used by children aged from 8 years and above and persons with reduced physical, sensory or mental capabilities or lack of experience and knowledge if they have been given supervision or instruction concerning use of the appliance in a safe way and understand the hazards involved. Children shall not play with the appliance. Cleaning and user maintenance shall not be made by children without supervision.
- Children should be supervised to ensure that they do not play with the unit.
- If your unit is fitted with a lock to prevent children being trapped inside, keep the key out of reach and not in the vicinity of the unit.

- Do not store explosive substances such as aerosol cans with a flammable propellant in this appliance.
- Do not store bottles or glass containers in the freezer compartment. Contents can expand when frozen (fizzy drinks) which may break the bottle and damage your freezer compartment. (If applicable)



WARNING

- Keep ventilation openings in the unit enclosure or in the built-in structure clear of obstructions.
 - Do not use mechanical devices or other means to accelerate the defrosting process, other than those recommended by the manufacturer.
 - Do not use electrical appliances inside the food storage compartments of the unit, unless they are of the type recommended by the manufacturer.
 - Do not damage the refrigerant circuit (The refrigerant is a very environmental-friendly gas but is also combustible. Take care when transporting or moving the unit to ensure that the refrigeration circuit is not damaged. In the event of damage avoid naked flames or ignition sources and ventilate the room in which the unit is placed for a few minutes.)
 - When positioning the appliance, ensure the supply cord is not trapped or damaged.
 - Do not locate multiple portable socket-outlets or portable power supplies at the rear of the appliance.
-

WARNING



IT IS HAZARDOUS FOR ANYONE OTHER THAN AUTHORISED SERVICE PERSONNEL TO CARRY OUT SERVICING OF REPAIRS WHICH INVOLVE THE REMOVAL OF COVERS.



TO AVOID THE RISK OF AN ELECTRICAL SHOCK DO NOT ATTEMPT REPAIRS YOURSELF.

Thank you

for purchasing your new Kenwood Fridge.

These operating instructions will help you use it properly and safely.

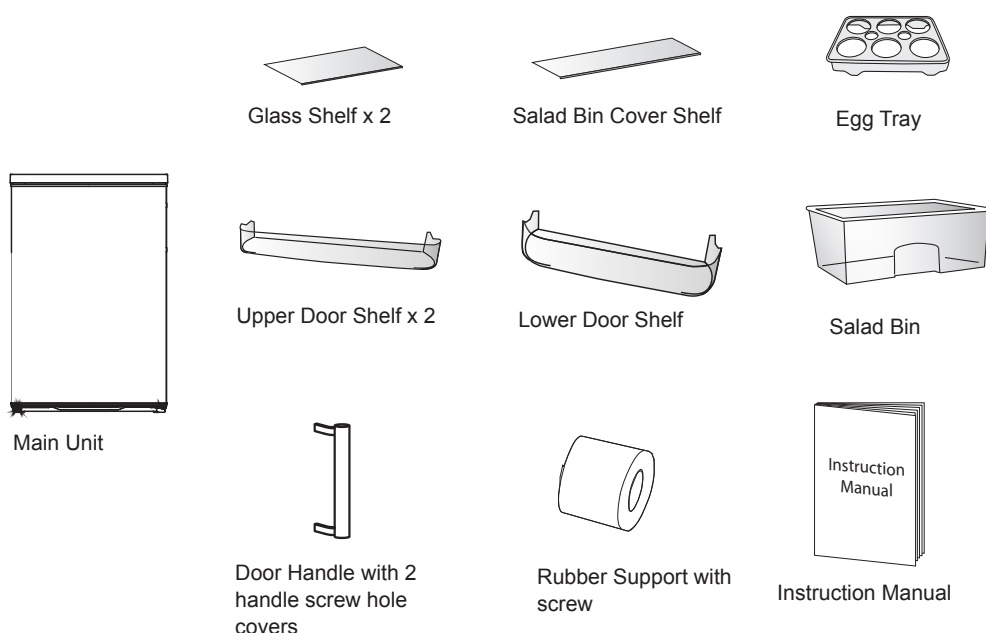
We recommend that you spend some time reading this installation/instruction manual in order that you fully understand all the operational features it offers.

Read all the safety instructions carefully before use and keep this installation/instruction manual for future reference.

unpacking

Remove all items from the packaging. Retain the packaging. If you dispose of it please do so according to local regulations.

The following items are included:



If items are missing or damaged please contact Partmaster (UK only).
Tel: 0344 800 3456 for assistance.

installation

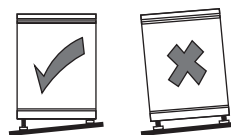
location

When selecting a position for your unit you should make sure the floor is flat and firm, and the room is well ventilated with an average room temperature of between 16°C and 43°C. Avoid locating your unit near a heat source, e.g. cooker, boiler or radiator. Also avoid direct sunlight as it may increase the electrical consumption. Extreme cold ambient temperatures may also cause the unit not to perform properly. This unit is not designed for use in a garage or outdoor installation. Do not drape the unit with any covering.

levelling the unit

To do this adjust the two levelling feet at the front of the unit.

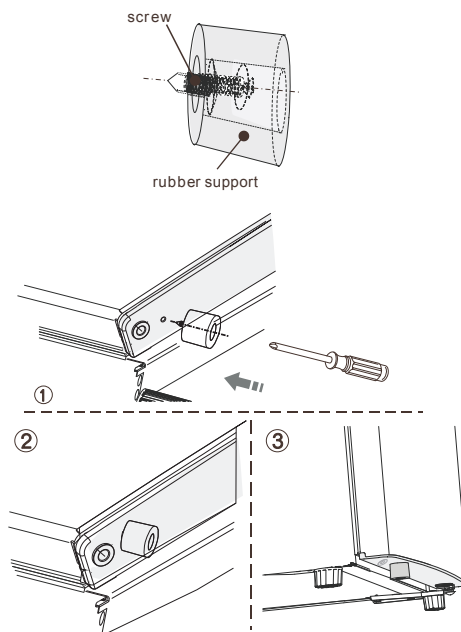
If the unit is not level, the doors and magnetic seal alignments will not be covered properly.



installing the rubber support

In the case the loading on the door is heavier than in the unit, opening of the door may cause the refrigerator the risk of tipping forward. To prevent tipping, insert the rubber support at the bottom of the door.

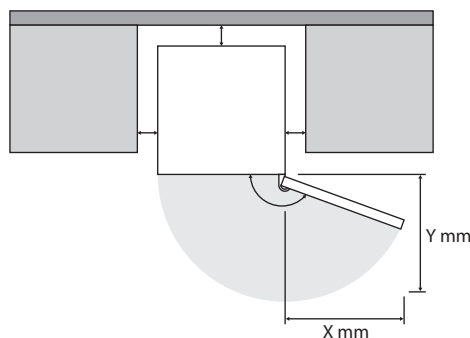
1. Tilt the appliance backward and locate the screw hole at the bottom left side of the door.
2. Insert the screw into the hole of the rubber support.
3. Align the rubber support with the hole on the bottom left side of the door, then tighten securely with a screwdriver.



free space requirements

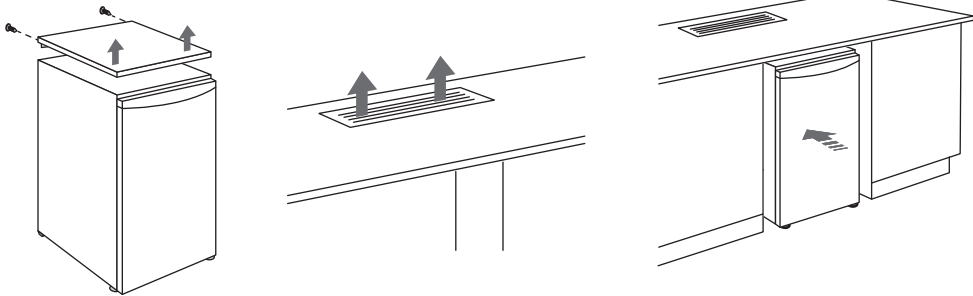
When installing the unit, ensure that 25 mm of free space is left at both sides, 50 mm at the rear of the unit and 25 mm at the top of the unit. The door can be opened to the right or the left, depending on which best suits the location.

Please ensure there is more than twice the width and depth distance space of the unit to fully open the door to a maximum angle.



installation

If the appliance is placed under a continuous worktop, the appliance lid (if applicable) may be removed and a ventilation grille of at least 200 cm² (available from DIY shops or specialist retailers) should be installed to the worktop above the rear of the appliance to increase ventilation.

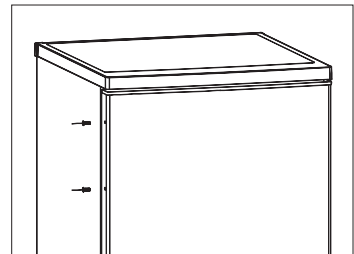


Benefits of increased ventilation:

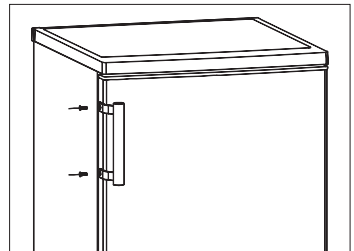
- Lowered power consumption
- Improved cooling performance
- Reduce running costs
- Prolong product life span

installing the door handle

1. Remove the screws from the door.



2. Take the door handle and remove the 2 handle screw hole covers from the door handle. Align the door handle with the screw holes on the door and screw tightly. Replace the 2 handle screw hole covers on the door handle.



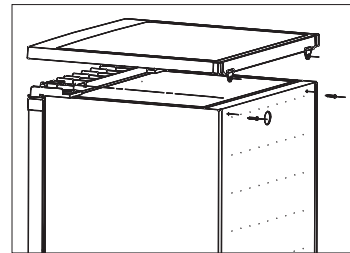
reversing the door swing

tools required: Philips style screwdriver / Flat bladed screwdriver / Hexagonal spanner

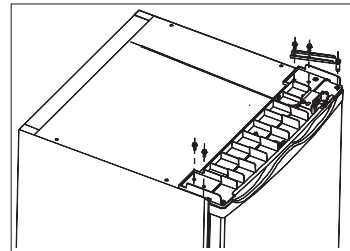


- Ensure the unit is unplugged and empty.
- To take the door off it is necessary to tilt the unit backwards. You should rest the unit on something solid, e.g. a chair just below the top panel.
- All parts removed must be saved to do the reinstallation of the door.
- Do not lay the unit flat as this may damage the coolant system.
- We recommend that 2 people handle the unit during assembly.
- If you want to have the door swing reversed, we recommend that you contact a qualified technician. You should only try to reverse the door yourself if you believe that you are qualified to do so.

1. Remove the two screws from the back of the top cover, then lift the top cover and place it on a padded surface to prevent from scratching.



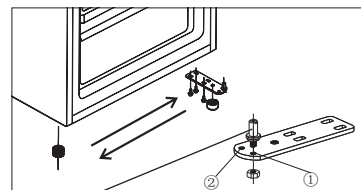
2. Remove the four screws (2 from each side). Remove the upper hinge. Lift the door and place it on a padded surface to prevent from scratching.



3. Lay down the unit. Remove both levelling feet, and bottom hinge. Swap their position.



Before transferring the bottom hinge to the other side, move the bottom hinge pin from hole 1 to 2. Tighten the pin securely.



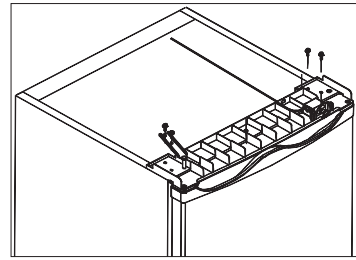
Bottom hinge pin

installation

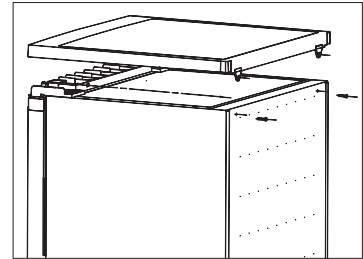
4. Stand the unit. Place the bottom hole of the door onto the bottom hinge pin. Insert the upper hinge pin into the upper hole of the door. Screw the upper hinge tightly. Screw also the other side tightly.



Ensure the door is aligned horizontally and vertically, so that the seals are closed on all sides before finally tightening the hinge.



5. Put back the top cover. Tighten the 2 screws at the back of the top cover.



6. Transfer the door handle to the other side of the door accordingly. Remove the 2 door screw hole covers from the other side of the door and swap their position with the door handle.

cleaning before use

Wipe the inside of the unit with a weak solution of bicarbonate soda. Then rinse with warm water using a sponge or cloth. Wipe completely dry before replacing the drawers. Clean the exterior of the unit with a damp cloth.

If you require more information refer to the **Cleaning** section.



- **Before Plugging in YOU MUST**

Check that you have a socket which is compatible with the plug supplied with the unit.

- **Before Turning On!**

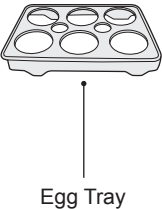
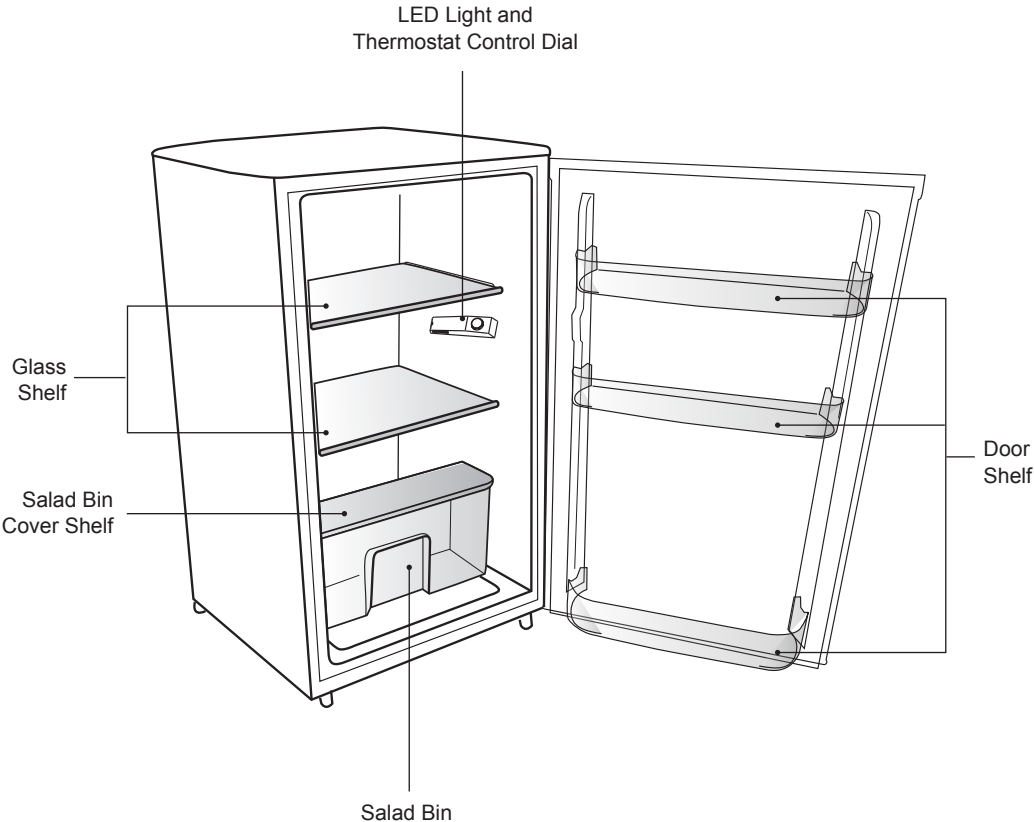
Do not turn on until two hours after moving the unit. The coolant fluid needs time to settle.

before using your unit

Before placing any food in your unit, turn it on and wait for 24 hours, to make sure it is working properly and to allow it time to fall to the correct temperature. Your unit should not be overfilled.

product overview

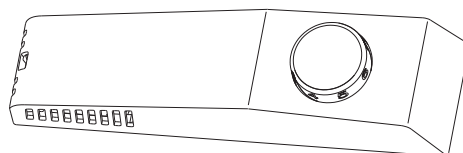
main unit



operation

switching on your unit

1. Before connecting the unit to the mains supply make sure that the thermostat control dial is set at position **0**. Connect the mains cable to the mains socket.
2. Adjust the thermostat control dial to the desired position, bear in mind that the higher the number, the lower the temperature. Position **2** or **3** or **4** is the recommended setting when operating at normal room temperature (between 16°C and 43°C).
3. The unit may not operate at the correct temperature if it is in a particularly hot or a particularly cold room, or if you open the door often.
4. To ensure that the unit is cool enough to sufficiently chill your food, wait 24 hours before filling it with food.
5. If you are concerned that your unit is not being kept cold enough and wish to check the temperature, you will need a special fridge/freezer thermometer. These are available from most supermarkets and hardware shops. Place the thermometer in the fridge and leave overnight. The correct temperature for the fridge should be at the recommended 0-8°C.



adjusting the temperature

The internal temperature of the unit is controlled by a thermostat. The recommended position is between **1** to **4** for colder working environments (i.e. during winter) and between **5** to **7** for hotter environments. Please adjust according to the environment.

noises inside the unit!

You may notice that your unit makes some unusual noises. Most of these are perfectly normal, but you should be aware of them!

These noises are caused by the circulation of the refrigerant liquid in the cooling system. It has become more pronounced since the introduction of CFC free gases. This is not a fault and will not affect the performance of your unit. This is the compressor motor working, as it pumps the refrigerant around the system.

tips for keeping food in the unit

- Cooked meats/fishes should always be stored on a shelf above raw meats/fishes to avoid bacterial transfer. Keep raw meats/fishes in a container which is large enough to collect juices and cover it properly. Place the container on the lowest shelf.
- Leave space around your food, to allow air to circulate inside the compartments. Ensure all parts of the unit are kept cool.
- To prevent transfer of flavours and drying out, pack or cover the food separately. Fruit and vegetables do not need to be wrapped.
- Always let pre-cooked food cool down before you put in the unit. This will help to maintain the internal temperature of the unit.
- To prevent cold air escaping from the unit, try to limit the number of times you open the door. We recommend that you only open the door when you need to put food in or take food out.

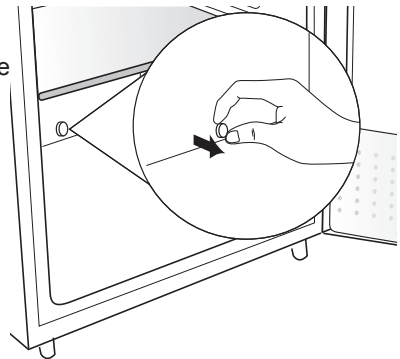
cleaning

defrosting

Frost may accumulate on the inner rear surface of the appliance which will defrost during the off cycle of the compressor.

Water is channelled via the drain hole to the collection tray above the compressor where it will evaporate.

Please ensure the drain hole is checked and cleaned on a regular basis so water can exit the storage compartment.



cleaning the interior and the exterior of the unit

- Remove all the shelves and drawers.
- Wipe the inside of the unit with a weak solution of bicarbonate soda and then rinse with warm water using a sponge or cloth. Wipe completely dry before replacing the shelves, drawers and salad bin.
- Use a damp cloth to clean the exterior, and then wipe with a standard furniture polish. Make sure that the door is closed to avoid the polish getting on the magnetic door seals or inside the unit.
- The grille of the condenser at the back of the unit and the adjacent components can be vacuumed using a soft brush attachment.

maintenance

changing the internal LED light

The internal light is an LED light. Before changing the light, switch off the appliance and unplug it first. If the light will not work, contact a qualified service agent.

care when handling / moving your unit

Hold the unit around its sides or base when moving it. Under no circumstances should it be lifted by holding the edges of the top surface.

servicing

The unit should be serviced by an authorised engineer and only genuine spare parts should be used. Under no circumstances should you attempt to repair the unit yourself. Repairs carried out by inexperienced persons may cause injury or serious malfunction. Contact a qualified technician.

switching off for long periods of time

When the unit is not in use for a long period of time, disconnect it from the mains supply, empty all food and clean the appliance, leaving the door ajar to prevent unpleasant smells.

condensation

Condensation may appear on the outside of the unit. This may be due to a change in room temperature. Wipe off any moisture residue. If the problem continues, please contact a qualified technician for assistance.

disposal

Old units still have some residual value. An environmentally friendly method of disposal will ensure that valuable raw materials can be recovered and used again. The refrigerant used in your unit and insulation materials require special disposal procedures. Ensure that none of the pipes on the back of the unit are damaged prior to disposal.

Up to date information concerning options of disposing of your old unit and packaging from the new one can be obtained from your local council office.

When disposing of an old unit break off any old locks or latches and remove the door as a safeguard.

specifications

Rated Voltage	220-240V~, 50 Hz
Rated Current	0.5 A
Rated Power	-
Dimension (H x W x D)	845 x 555 x 575 mm

Features and specifications are subject to change without prior notice.

product fiche

Brand	Kenwood
Model	KUL55X18
Household Appliance Category	1
Energy Efficiency Class	A+
Energy consumption 118 kWh per year , based on standard test results for 24 hours. Actual energy consumption will depend on how the appliance is used and where it is located.	
Fridge Storage Volume	137 L
Freezer Storage Volume	-
Static	
Temperature Rise Time	-
Freezing Capacity	-
Climate Class	N, ST, T This appliance is intended to be used at an ambient temperature between 16°C and 43°C.
Airborne Acoustical Noise	40 dB(A) re 1 pW

Need Help with your product?

Your product is supported by Knowhow

under a Trademark Licence from Fisher & Paykel Appliances Italy SpA.

For help or spare parts please call us on:

0344 561 1234



The symbol on the product or its packaging indicates that this product must not be disposed of with your other household waste. Instead, it is your responsibility to dispose of your waste equipment by handing it over to a designated collection point for the recycling of waste electrical and electronic equipment. The separate collection and recycling of your waste equipment at the time of disposal will help conserve natural resources and ensure that it is recycled in a manner that protects human health and the environment.

For more information about where you can drop off your waste for recycling, please contact your local authority, or where you purchased your product.

DSG Retail Ltd. (co. no. 504877)
1 Portal Way, London, W3 6RS, UK

Manufactured for DSG Retail Limited under Licence from Fisher & Paykel Appliances Italy SpA.
DSG Retail Limited is responsible for after sales service.